

MGX-6598DC

**MAXIMUM 21462 KW (1961 HP)
@ 2300 RPM (PLEASURE CRAFT)**

STANDARD EQUIPMENT

- Vertical offset, nodular aluminum housing
- Electric GP-valve with manual override
- EC600PC profile module – interface for engagement signals
- Integral oil cooler for raw water cooling
- Oil strainer and oil filter



QUICKSHIFT®
BY TWIN DISC

INPUT RATINGS

Reduction Ratios :1	Pleasure Craft @ 2300 RPM	Light Duty @ 2300 RPM	Intermediate Duty @ 2100 RPM	Medium Duty @ 1800 RPM	Continuous Duty @ 1800 RPM
2.46, 3.03	1462 kW (1961 hp)	1278 kW (1714 hp)	1000 kW (1341 hp)	824 kW (1105 hp)	771 kW (1034 hp)
3.48		1241 kW (1664 hp)	945 kW (1267 hp)	779 kW (1045 hp)	729 kW (978 hp)
3.93	1343 kW (1801 hp)	1131 kW (1517 hp)	861 kW (1155 hp)	710 kW (952 hp)	664 kW (890 hp)
4.43	1172 kW (1572 hp)	1055 kW (1415 hp)	804 kW (1078 hp)	662 kW (888 hp)	619 kW (830 hp)

For service classification definitions and important notes refer to the Twin Disc Marine Product Guide or contact Twin Disc directly.
Ratings shown for use with standard right hand rotation engines. The maximum allowable rated engine speed is 2500 rpm.

EC600PC ELECTRONIC PROPULSION CONTROL SYSTEM

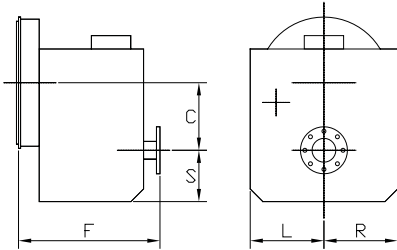
- Optional equipment: display and joystick



OPTIONAL EQUIPMENT

- SAE J617 housing no. 1
- SAE J617 housing no. 0
- Flexible coupling for 14" flywheel (SAE J620 size 355)
- Flexible coupling for 18" flywheel (SAE J620 size 460)
- Input hub for freestanding installation
- EC600PC e-troll module and propulsion control system
- Output shaft driven trailing pump
- Companion flange/bolts set
- Monitoring devices to customer's specification
- Mounting brackets
- Live PTO
SAE J744 size 127-4, 32-4 (SAE "C", 4-bolt) – max. 600 Nm
- Hydraulic clutchable PTO
SAE J744 size 127-4, 32-4 (SAE "C", 4-bolt) – max. 600 Nm
- Secondary live PTO for power steering pumps
SAE J744 size 101-2, 22-4 (SAE "B", 2-bolt) – max. 75 Nm or
SAE J744 size 82-2, 16-4 (SAE "A", 2-bolt) – max. 75 Nm
- Dry weight including SAE no. 1 housing and SAE 355 flexible coupling: 580 kg

MGX-6598DC



C	310 mm (12.20")
S	275 mm (10.83")
F	603 mm (23.72")
L	360 mm (14.17")
R	360 mm (14.17")

Since 1918, we've been putting horsepower to work by designing, engineering and manufacturing rugged-duty industrial products. Our products and our reputation are bolted to the most renowned engine manufacturers and equipment OEMs in the world. Our mission is to make boats, machines and off-highway vehicles more productive, more durable, more operator-friendly, and more cost-effective. From design and installation consultation through after-sale support, Twin Disc and its distributors are committed to your business. No one knows more about managing horsepower in more ways than Twin Disc.

TRANSMISSIONS

ELECTRONIC CONTROLS

EXPRESS JOYSTICK SYSTEM*

SAILDRIVES

EXPRESS POSITIONING*

ARNESON® SURFACE DRIVES

MARINE CONTROL DRIVES

ROLLA™ PROPELLERS

THRUSTERS

VETH PROPULSION SYSTEMS

STEERING SYSTEMS

RUDDERS

TRIM TABS

PUMP DRIVES

PTOS



Twin Disc, Incorporated
Racine, Wisconsin 53403 USA
Phone +1-262-638-4000
Fax +1-262-638-4482
www.twindisc.com

Twin Disc, Incorporated reminds users of these products that their safe operation depends on use in compliance with engineering information provided in our product guides, installation/assembly drawings and/or manuals. Users are also reminded that safe operation depends on proper installation, operation and routine maintenance and inspection under prevailing conditions. It is the responsibility of users (and not Twin Disc, Incorporated) to provide and install guards or safety devices which may be required by recognized safety standards or by the Occupational Safety and Health Act of 1970 and its subsequent provisions.

USA • AUSTRALIA • BELGIUM • CHINA • INDIA • ITALY • NETHERLANDS • SINGAPORE • SWITZERLAND

2102_Bulletin_MGX-6598DC
© 2021, Twin Disc, Incorporated
Printed in the USA